

# GAS TRAC<sup>®</sup> FMD

FIXED METHANE DETECTOR

ADVANCED METHANE  
MONITORING SYSTEM



**SENSIT**  
Technologies

# GAS•TRAC<sup>®</sup> FMD

FIXED METHANE DETECTOR

## REMOTE METHANE MONITORING PLATFORM



The **GAS•TRAC<sup>®</sup> FMD** is an active sampling system equipped with a tunable diode laser spectroscopy (TDLAS) cell capable of detecting methane as low as 200 PPB. When equipped with an anemometer, the **FMD** is capable of localizing leaks, as well as providing state-of-the-art data to aid in quantification.

Outgoing data is transmitted via cellular to either **SENSITConnect** or the user's chosen server. Advanced analytics, alarms, and automated alerts are available via **SENSITConnect**. Integration with other software infrastructure is available upon request.

The FMD is designed for autonomous and continuous operation via solar panel or connected power. Setup is quick and easy. The **FMD** weighs 15 pounds and can be deployed on a tripod, providing easy portability, or it can be permanently mounted to a pole.

This system is the perfect addition to any continuous compliance monitoring or event survey strategy.



Fugitive and Process Emissions



Industrial Health, Safety, and Compliance



Landfill

### STANDARD FEATURES

- Methane Selective Internal Optical Assembly for Local Detection
- Built-in Sampling Pump
- Built-in Rechargeable Battery
- Wireless Communication to Secure Server
- Continuous Datalogging

### APPLICATIONS

- Greenhouse Gas Emissions Monitoring
- Periodic Environmental Compliance
- Leak Detection and Localization



### STANDARD KIT

- Controller Box
- Tripod
- Solar Panel
- Instruction Manual

### OPTIONAL HARDWARE:

- Ultrasonic Anemometer
- Vane Anemometer
- Indicator Alarm Light
- Alarm Siren
- Calibration Gas

## PRODUCT SPECIFICATIONS

<b>Size:</b> Fully assembled with anemometer and antenna D x W x H (8in x 12in x 24in)
<b>Weight:</b> Base unit: 15 lbs approx
<b>Operational Temp:</b> -20°C to 50°C (-4°F to 122°F)
<b>Operating Humidity:</b> 0% and <95% non-condensing
<b>Storage Temp:</b> -40°C to 60°C
<b>Battery Life:</b> 8 Days without Recharging via Solar Panel
<b>Power Requirement:</b> Built in Rechargeable Battery Maintained by Solar Panel
<b>Power Consumption:</b> Less than 2 Watts
<b>Environmental Pressure:</b> 68kpa-115kpa
<b>Laser Safety:</b> Class IIIr
<b>Enclosures:</b> NEMA 4X Fiber Reinforced Enclosure
<b>Communication Interface:</b> Local USB and Cellular. Local wireless available upon request.

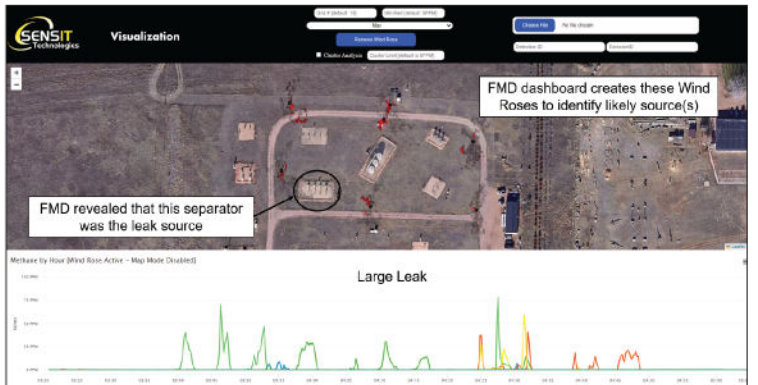
## DETECTOR SPECIFICATIONS

PARAMETER	DESCRIPTION
<b>Technologies</b>	Near IR TDLAS with Multi-pass Cell
<b>Wavelength</b>	~1650 nm
<b>Methane Range</b>	0-100 vol.%
<b>Methane Resolution</b>	0.2 PPM (200 PPB)
<b>Methane Accuracy</b>	10% (+/- 0.5 ppm min)
<b>Methane T90</b>	<10 seconds
<b>Laser Life</b>	>5 years
<b>Pre-Filter Life</b>	6 months estimated
<b>Internal-Filter Life</b>	6 months estimated
<b>Pump Life</b>	10,000 hours

**6 FMDs DEPLOYED AT A SIMULATED OIL AND GAS SITE. CONTROLLED EMISSIONS INTRODUCED.**



**ADVANCED METHANE DETECTION SYSTEM CAPABLE OF IDENTIFYING AND LOCATING INTRODUCED EMISSIONS.**



**GAS • TRAC® FMD Accessories & Replacement Parts**

GAS • TRAC® FMD	Part # 932-00000-50
Controller Box	Part # 832-00000-50
Laser Assembly	Part # 870-00103
Vane Anemometer	Part # 882-00187
Solar Panel	Part # 870-00110
Ultrasonic Anemometer	Part # 870-00114
Indicator/ Alarm Light	Part # 870-00107
Alarm Siren	Special Request
Tripod	Part # 870-00149



851 Transport Drive  
Valparaiso, IN 46383-8432

Phone: 888 4SENSIT  
888 473 6748  
219 465 2700

Fax: 219 465 2701  
www.GasLeakSensors.com

**MADE IN THE USA**  
WITH GLOBALLY SOURCED COMPONENTS

SENSIT Technologies  
is an ISO 9001:2015 certified company.



Distributed by:

