





# GAS TRAC<sup>®</sup> LZ30

## METHANE GAS DETECTOR

**QUICKLY AND SAFELY DETECT METHANE GAS LEAKS IN DIFFICULT TO REACH AREAS.**



The **LZ-30** from SENSIT Technologies is a compact methanespecific leak detector that provides fast and accurate readings at distances up to 100 feet.

The **LZ-30** utilizes TDLAS (tunable diode laser absorption spectroscopy) technology to provide instantaneous and accurate responses to the presence of methane.

Designed to be competitively priced, the **LZ-30** is perfect for hard to reach areas, eliminating the need to directly access the gas plume, climb to elevated areas, access fenced-in property and potentially hazardous situations through windows.

**SMART-LINK LIVE** application meets the growing demand for tracking and traceability. It allows the user to keep their eyes on the target while data streaming from the **LZ-30** is captured within the application. The application logs date, time, GPS coordinates and gas measurements. Sessions can be exported from the phone/tablet in multiple formats. With built-in picture capture, the user can associate any reading with a picture or even report a corrosion issue.

### STANDARD FEATURES

Methane Selective	Rechargeable Battery
Continuous Detection	Low Cost of Ownership
Adjustable Alarm Points (Visual & Audible)	Industry Leading 2-year Warranty (Including Battery)
Intrinsically Safe Design	<b>SMART-CAL 360</b> Compatible (Automatic Calibration/Bump Testing)
Ergonomic Design	<b>SERVICE 360</b> Compatible (Firmware Updates)
Easy to Maintain	<b>SMART-LINK 360</b> Compatible (Download Logs)
Cal Cell Integrated in Carrying Case	<b>GIS 360</b> Compatible (Real-Time Mapping/Logging)

### APPLICATIONS

#### Natural Gas Industry

Upstream | Midstream | Downstream

#### Emergency Response

Fire, Hazmat & Rescue

#### Industrial

Steel Industry | Petrochemical Facilities | Paper & Pulp Production

Many More!



## STANDARD KIT

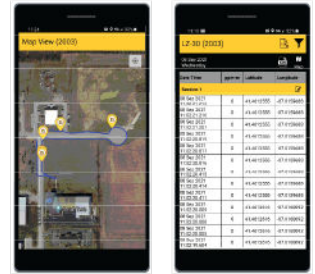
- Hard Carrying Case
- Integrated Calibration/Bump Test Cell
- Charger Base with Wall Transformer
- Protective Boot
- Wrist Strap
- Instruction Manual

## LANGUAGES SUPPORTED

English | French | German | Italian | Polish | Spanish

## SMART-LINK LIVE

- ✓ Free 30-day Trial
- ✓ Route mapping (GPS Coordinates, PPM•M, Date/Time)
- ✓ Real Time Tracking
- ✓ Capture (Pictures/Videos)
- ✓ Exportable (.CSV/.PDF/.KML File Formats)
- ✓ Session Naming
- ✓ Data Filtering
- ✓ Built-in Database w/Backup
- ✓ Android & iOS Support



## PRODUCT SPECIFICATIONS








<b>Size:</b>	164mm (6.5") x 78mm (3.0") x 36mm (1.5")	<b>Communication:</b>	Bluetooth. Supported by Android & iOS
<b>Weight:</b>	300g (0.7lbs)	<b>Laser Classification:</b>	IR laser (methane detection) Class 3R Target laser (green) Class 3R Distance laser (red) Class 3R
<b>Operational Temp:</b>	-20C to 45C (-4F to 113F)	<b>Calibration/Bump Test:</b>	Carrying case incorporates calibration/bump test cell.
<b>Storage Temp:</b>	-40C to 60C (-40F to 140F)	<b>Detection Technology:</b>	Tunable Diode Laser Absorption Spectroscopy (TDLAS)
<b>Storage/Operational Humidity:</b>	≤98% non-condensing	<b>Methane Detection Range:</b>	0-50,000ppm-m in 1ppm-m increments
<b>Power:</b>	Internal Lithium Ion	<b>Sensitivity:</b>	5ppm-m ≤15m (50ft)/10ppm-m ≤30m (100ft) @ > 300ppm-m
<b>Battery Life:</b>	6.5 Hours Continuous	<b>Response Time:</b>	< 0.1 seconds
<b>Recharge Time:</b>	3 to 4 Hours	<b>Detection Distance:</b>	0.5m to 30m (1.5' to 100') Distance may vary depending on reflection
<b>Intrinsic Safety:</b>	UL   CSA	<b>Distance Indicator:</b>	0.2m to 30m (6" to 100') Range may vary depending on reflection
<b>Enclosure:</b>	IP64	<b>Beam Dimension:</b>	Conical, 20cm diameter at 30m (8" at 100')
<b>Display:</b>	OLED	<b>Alarms:</b>	Adjustable threshold alarm with baseline: Visual, audible, and tactile
<b>Calibration Accuracy:</b>	±10%	<b>Warnings:</b>	High/Low reflection, low battery



# GAS TRAC<sup>®</sup> LZ30

## METHANE GAS DETECTOR

### ACCESSORIES & REPLACEMENT PARTS

 <p><b>Hard Carrying Case with Foam</b> Part # 872-00035</p>	 <p><b>Protective Boot</b> Part # 870-00098</p>	 <p><b>Calibration / Bump Test Cell</b> Part # 882-00150-SN</p>	 <p><b>Charging Kit with Power Supply</b> Part # 871-000?? For IS Units</p>
 <p><b>Wrist Strap</b> Part # 360-00040</p>	 <p><b>Training Cells with Case</b> Part # 882-00161</p>	 <p><b>Instruction Manual</b> Part # 750-00096</p>	<p><b>Charging Base</b> Part # 871-00098 For IS Unites</p> <p><b>Power Supply for Charging Base</b> Part # 871-00078</p>



851 Transport Drive  
Valparaiso, IN 46383-8432  
Toll Free: 888 4SENSIT  
Phone: 219 465 2700  
Fax: 219 465 2701  
www.gasleaksensors.com

SENSIT Technologies is an ISO 9001:2015 certified company.



Distributed by: \_\_\_\_\_